

**TŌKU MĀPIHI MAUREA  
KURA KAUPAPA MĀORI  
2026**



**Te Koromakinga:**

Tōku reo,  
Tōku ohooho,  
Tōku reo,  
Tōku māpihi maurea,  
Tōku reo,  
Tōku whakakai marihi.

**Tirohanga Whānui:**

Kia eke ai te tamaiti ki tōna taumata.

**He whakamārama:**

He Kura Kaupapa Māori a Tōku Māpihi Maurea Kura Kaupapa Māori i raro i te Education Act 1989, he kura S155 hoki.

He mea whakatū e te whānau Te Kura Kaupapa Māori o Tōku Māpihi Maurea i runga i te mana motuhake, e tupu Māori mai ai ngā tamariki i roto i te reo, te tikanga, te mātauranga me te tirohanga Māori, kia pakari ai tō rātou tū i tēnei ao hurihuri e noho nei tātou.

**Ko ngā whakapono:**

E whakapono ana te kura:

- ki ngā mātāpono o Te Aho Matua
- ka taea e ngā tamariki katoa te ako
- mā te mahi ngātahi o te kura me te whānau ka eke ngā tamariki ki ngā taumata
- mā te huarahi o te reo Māori me ngā tikanga ka tū pakari ngā tamariki i roto i te ao kikokiko nei.

**Ko ngā uara:**

- Aroha – Aroha atu, aroha mai.
- Whakaute - Tamaiti ako ki te kāinga, tūngia ki te kura, ki te marae, tau ana.
- Pono me te tika - Mā te tika, mā te pono me te aroha e.
- Whanaungatanga – Anō te pai te āhuareka, o te nohonga o ngā tēina me ngā tuākana.
- Manawaroa - Whāia te iti kahurangi ki te tūohu koe me he maunga teitei.

## **Ko ngā iwi:**

- Ko Ngāti Haua, ko Ngāti Wairere ngā tāngata whenua. Nō rātou te mana whenua.
- Ka hāpai te kura i ngā tikanga o Ngāti Wairere, o Ngāti Haua hoki.
- Mai i te tirohanga ahurea Māori tūturu ka whakaaro nui te kura ki ngā tikanga me ngā mātauranga o ētehi atu.

## **Whakawhiti kōrero ki te taha o te whānau:**

He Poari Matua tō te kura, arā, ko ngā ringaringa o te whānau. E tūwhera ana ngā hui Poari ki te whānau. E kaha ana hoki te Poari ki te whai whakaaro mai i te whānau e pā ana ki ngā kaupapa motuhake.

E kaha ana a Tōku Māpihi Maurea Kura Kaupapa Māori ki te mahi ngātahi ki te taha o te whānau ahakoa he aha te take.

## **Tō tātou hapori:**

I te tau 1993 i whakaritea e ngā whānau o ngā kōhanga reo o Ngā Kuaka, Tōku Māpihi Maurea me Te Amokura kia whakatū ai i tētahi kura kaupapa Māori mō ngā tamariki e puta ana i ēnei kōhanga reo. E rua tau te noho mai o tēnei kura i tētahi whare o Te Kaunihera o Kirikiriroa i te huarahi o Pembroke i te tāone. He kura tūhāhā tēnei, arā, kāore i whai pūtea mai i te Kāwanatanga ki te whakahaere i te kura.

I tūwhera mai i te huarahi o Silverdale i te **24 o Paenga-whāwhā i te tau 1995**, e tata ana ki Te Whare Wānanga o Waikato. Ko te nuinga o ngā tamariki i ahu mai i ngā kōhanga reo tautoko o te kura, arā, mai i Ngā Kuaka me Tōku Māpihi Maurea. I tua atu o ērā, nō ngā hau e whā ngā whānau.

I tēnei wā 86 ngā tamariki Tau 1-8. Ka haere mai ngā tamariki i ngā tōpito katoa o Kirikiriroa, ruarua noa iho ka noho tata ki te kura. Ko te nuinga o ngā tamariki ka noho ki te kura mai i te rima tau te pakeke tae noa ki te 12-13 tau te pakeke. Ko te 100% o ngā tamariki he Māori, heoi ka whakapapa atu te nuinga ki ētehi anō whenua o te ao.

Kua whai mahi te nuinga o ngā mātua, ā, ko ētehi atu kei te whai i te mātauranga. E āhei ana te nuinga o ngā whānau ki te kōrero Māori, heoi kua ako te nuinga i tātou reo Māori hei reo tuarua. He nui ngā momo tautoko a te whānau – tautoko i ngā akoranga, te Poari, ngā haerenga, te kapa haka, ngā wānanga, ngā ohu, ngā kaupapa kohi pūtea, te aha, te aha. Ahakoa he aha te mahi he mahi rangatira.

Nō ngā hau e whā ngā kaimahi o te kura. Kua whakaako te nuinga mō te wā roa. E whitu ngā akomanga – Te Aroha, Te Puāwai, Te Piringa, Te Tumanako, Te Whakapono, Te Rangimārie me Te Atawhai. He akomanga Reo Pākehā hoki. Tokowhitu ngā kaiako. Kotahi te kaiako mō ngā akoranga Reo Pākehā, ā, e toru rā o ia wiki tēnei kaiako e whakaako ana. Kei te kura hoki tētehi Kairuruku Tautoko Akoranga (LSC), ka tautoko ia i tō tātou nei kura me ētehi atu kura/puna reo i raro i te maru o Te o Tainui. He tari hoki kei te kura mō ētehi Pouwhirinaki (RTLB). Tokorua ngā kaiāwhina i te kura hoki.

## Te Āhua o te Ākonga Ka Puta

### *Kia ngākau māhaki*

Kua mōhio tātou ki tēnei āhua o te ākonga pena ka:

- mahi ngātahi
- whakaute tangata
- aroha tētehi ki tētehi
- whakaatuhia te tuākana/tēina

Ngā Momo Akoranga:

- Ngā uara o te kura
- Pūkenga hapori
- Mahi tuākana/tēina
- Pūkenga amorangi / National Young Leaders
- Mauri Tau
- Kaupapa Hauora
- Reo – whakanui/tautoko/hāpai
- Mahi ārahi / mahi whakruruhau / mahi kaitakawaenga

### *Arohaina te reo*

Kua mōhio tātou ki tēnei āhua o te ākonga pena ka:

- taea e te ākonga te whakaputa i ōna whakaaro mā te reo Māori
- eke te kounga o tōna reo matatini ki ngā taumata e tika ana
- eke te kounga o tōna reo Pākehā ki ngā taumata e tika ana
- tīmata ia ki te ako i tētehi reo tuatoru.

Ngā Momo Akoranga:

- Ngā hītori o te reo Māori
- Akoranga Reo Pākehā (Tau 5-8)
- Pānui – ki, tahi, arahanga
- Reo ā-waha – mahi whakarongo/mahi kōrero / reo arotahi / whaikōrero
- Tuhituhi

### *Tū rangatira*

Kua mōhio tātou ki tēnei āhua o te ākonga pena ka:

- mātua mōhio ia ki tōna whakapapa, iwi, hapū, whānau, tūrangawaewae
- mōhio ia ki ngā pēhitanga o ngā iwi taketake o te ao, otirā te ao whānui tonu
- mōhio ia ki ngā kōrero mō Te Tiriti o Waitangi
- tiaki tika ia i tō tātou taiao
- whakaaro whānui / hōhonu ia
- arohaehae ia i ngā kaupapa/take/te aha, te aha
- whai hua tana raweke i ngā momo hangarau mōhiohio.

Ngā Momo Akoranga:

- Mahi Tōrangapū - ā iwi / ā motu / ao whānui
- Hangarau mōhiohio
- Kura Taiao – mārā kai, hangarua, toitūtanga...
- Pūkenga whakaaro
- Ngā awe o te ao pāpaho, whatunga pāpori, te aronga tinana
- Pūkenga Ora – tunu kai, penapena moni, whakatō kai, whai āwhina, toitūtanga, kaitiakitanga

### *Ka tū pakari hei raukura mō tōna iwi*

Kua mōhio tātou ki tēnei āhua o te ākongā pena ka:

- mātua mōhio ia ki tōna whakapapa, iwi, hapū, whānau, tūrangawaewae
- mōhio ia ki ngā tikanga o Waikato-Tainui, ngā tikanga o ōna ake iwi
- mōhio ia ki ngā pūrākau
- mārama ia ki ētehi take nunui o te ao
- ngākau nui ia ki ngā iwi katoa.

Ngā Momo Akoranga:

- Noho marae – Waikato-Tainui, marae o iwi kē atu
- Kīngitanga
- Mahi Rangahau / Pakirehua
- Hāpai i tangata kē atu, mahi tautoko hāpori
- Ngā Mahi ā te Rēhia – mōteatea, waiata, haka, poi, whakaari
- Ngā mōteatea, waiata o Waikato-Tainui
- Koroneihana / Poukai / Ngā Hui a te Iwi/Raupatu

### ***Kia tupu tonu te mīharo ki tēnei mea te ako***

Kua mōhio tātou ki tēnei āhua o te ākongā pena ka:

- whakaputa ia i ōna ake whakaaro
- hanga pātai / whakautu pātai ia
- pūmahara ia – reflective / whakatau ia ki whea ināianei
- whakatau whāingaia
- mahi takitahi / mahi ngātahi ia.

Ngā Momo Akoranga:

- Huarahi Ako – Learning Styles/Gardiners / Bloom's / UDL
- Mahi Rangahau / Pakirehua
- AKO
- Hangarau mōhiohio

### **Ko ngā hononga ki ngā herenga o te Mātauranga**

Ka hāngai ēnei hononga ki ngā whāinga rautaki. E whai whakaaro ana ki ngā NELPs me ngā BPO.

#### **NGĀ WHĀINGA MŌ TE MĀTAURANGA (NELPs)**

1. Me whakatūturu ko ngā wāhi ako he haumarū, whai wāhi, he wātea hoki i te kaikiri, te toihara me te hawene
2. Me teitei ngā wawata mō ia ākongā, me te tautoko mā te tūhonohono ki ō rātou whānau, hapori hoki ki te auaha me te tuku i te mātauranga e urupare ana ki ō rātou hiahia, me te tautīnei i ō rātou tuakiri, reo, ahurea hoki
3. Whakaiti i ngā tauārai ki te mātauranga mō te katoa, tae atu ki ngā ākongā Māori, nō te Moana-nui-a-Kiwa hoki, ngā ākongā hauā me rātou e hiahia ana ki te tautoko akoranga
4. Me whakatūturu ka whiwhi ngā ākongā katoa i ngā pūkenga taketake, tae atu ki te reo\*, reo matatini me te pāngarau \* ka kapi te reo ā-waha i ngā tikanga katoa o te whakakakau e whakamahia ana e te ākongā hei reo tuatahi, tae atu ki te Reo Rotarota o Aotearoa.
5. Whakauru tūturu i te reo Māori me ngā tikanga Māori ki ngā pito katoa o te ora o te wāhi ako
6. Whakawhanake i ngā kaimahi ki te whakakaha i te āheinga tautoko whakaakoranga, hautūtanga me te ākongā huri noa i te rāngai mātauranga
7. Mahi tahi ki ngā ahumahi me ngā kaitukumahi kia whakatūturu e whiwhi ana ngā ākongā ki ngā pūkenga, mātauranga me ngā huarahi kia angitu ki te mahi.

## NGĀ WHĀINGA MATUA O TE POARI (BPO)

E whā ngā whāinga matua o ngā poari, e takoto ana ki te Wāhanga 127 o te Education and Training Act 2020. Ka āwhina ēnei i ngā poari ki te arotahi ki ngā mea hira ki ngā ākonga me ō rātou whānau. Me whakarite ngā Poari:

1. kia eke ia ākonga o te kura ki tō rātou ake paerewa mātauranga
2. he wāhi haumarū ā-tinana, ā-kare ā-roto hoki te kura, e whakamanatia ana ngā mōtikatangata, ā, ka ngana ki te takahi atu i te kaikiri, te tauhae, te whakaweti me ētahi atu āhuatanga whakatoihara
3. he kura kauawhi i ngā matea kanorau o ngā ākonga
4. whakamana te kura i Te Tiriti o Waitangi, mā te:
  - i. whakarite i ōna mahere, kaupapahere marautanga ā-rohe hoki kia whakaata ake i ngā tikanga Māori, te mātauranga Māori me te ao Māori o te rohe rā; ā
  - ii. te whai i ngā mahi whaitake e wātea ai ngā akoranga ki te tikanga me te reo Māori; ā,
  - iii. me te whakatutuki i ngā putanga mana ōrite mā ngā ākonga Māori.

### Ko ngā whāinga rautaki 2026

#### Goals that focus on improving student achievement:

- 1) Kia piki ake te koununga o te reo Māori me ōna tikanga.
- 2) Kia eke ngā tamariki ki ō rātou ake taumata ikeike i roto i te mātauranga.
- 3) Ka aro ki ngā kaupapa e ngākaunui ana ki ngā ākonga.
- 4) Ka whakatau kōwhiringa i roto i ngā akoranga.
- 5) Kia tae mai ngā ākonga ki te kura.
- 6) Ka whakaū anō ngā ākonga ki ngā akoranga.

#### Goals for curriculum, support programmes, community partnership and teacher developme:

Kia whakakaha ake i ngā tikanga o te kura (school culture).

- 1) Kia whakawhānui ake te puna rauemi.
- 2) Ka ū kaha me te whakatinana i ngā uara o te kura.
- 3) Ka whai wāhi ngā whānau ki te ako i te reo Māori.
- 4) Ka whai wāhi ngā whānau i roto i ngā akoranga o ngā tamariki.

#### Goals for personnel, processes and systems:

Kei tō mātou nei kura ēnei tuinga:

- 10 Year Property Plan
- Annual Budget
- Policies & procedures:  
Health & Safety, Curriculum, Property, Financial Management, Property  
Management, Personnel.



# STRATEGIC PLAN FOR STUDENT ACHIEVEMENT 2026

Objectives	Strategies	Anticipated Duration
Kia whakapiki ake te reo o ngā ākonga.	<ul style="list-style-type: none"> <li>• Kia tika, kia rere, kia Māori te reo – kia kōrero Māori i ngā wā, ngā wāhi katoa.</li> <li>• Waihanga he māhere whakapakari reo Māori mō ngā ākonga, ngā kaiako, ngā whānau anō hoki.</li> <li>• Tirohia te hōtaka reo ā waha ki Te Kura o Ngāti Hauā.</li> <li>• Whakarite tō tātou ake hōtaka whakapakari reo ā waha – akoranga whakarongo, kōrero, whakawhānui puna reo, kīwaha etc.</li> <li>• Whakatō ki roto i ngā ākonga, ngā kaiako, ngā whānau te aroha ki tō tātou reo māori – arohaina te reo.</li> <li>• Whakaako te hītori o te reo Māori ki ngā ākonga/whānau.</li> <li>• Kia kuhu mai ngā tāngata matatau hei tauira mō ngā ākonga.</li> <li>• Whakamahi i ngā rautaki/ ariā mō te reo ruatanga / hopu reo.</li> <li>• Whakatū ētehi horopaki reo māori - Mahi Whakaari, Ngā Manu Kōrero, Ngā Pū Kōrero o Āpōpō, Kura Reo mō ngā ākonga</li> <li>• Hangaia rauemi / hoko rauemi tautoko</li> <li>• Whakatau pūtea tautoko.</li> <li>• Wānanga reo mō ngā tuākana Tau 7 &amp; 8 ().</li> <li>• Whakarite mahere reo ā waha.</li> </ul>	Ia tau, haere ake nei.
Kia piki ake te reo o ngā kaiako.	<ul style="list-style-type: none"> <li>• Mahi whakangungu kaiako.</li> <li>• PLD mō ngā kaiako –Te Ahu o te Reo / Kura Reo / Wānanga Reo</li> <li>• Tirohia ngā rangahau mō te hopu reo/grammar instruction.</li> </ul>	Ia tau, haere ake nei.
Kia piki ake te reo o ngā whānau.	<ul style="list-style-type: none"> <li>• Tautoko ngā kura reo / Wānanga Reo / Wānanga Te Aho Matua/ Te Ahu o te Reo / Akoranga mō te Whānau</li> <li>• Whakatū/Tautoko i ngā Wānanga Reo mō ngā mātua - ngā mātanga reo, te reo o Waikato-Tainui.</li> <li>• Tuku kupu, karakia, waiata ki te kāinga.</li> <li>• Kōrerotia te reo i te kāinga.</li> <li>• Kuhu mai ki te kura āwhina ai hei whakapakari i te reo.</li> <li>• Āwhinatia te tamaiti me tāna mahi kāinga.</li> <li>• Pānuitia te pānui o te kura.</li> <li>• Haere mai ki ngā hui ā-kura.</li> <li>• Whakatau anō te kaha o ngā mātua ki te tautoko i tō tātou reo rangatira.</li> <li>• Uiui Whānau Hōu – kōrero mō te reo i te kāinga.</li> <li>• Kia ū ki te huarahi reo Māori mō ngā tamariki (Wharekura).</li> <li>• Whakatū Pō Whakamōhiohio</li> </ul>	Ia tau, haere ake nei.

# STRATEGIC PLAN FOR STUDENT ACHIEVEMENT 2026

Objectives	Strategies	Anticipated Duration
<p>Kia whakapakari ake te reo matatini o ngā tamariki kia eke ai te katoa ki ngā taumata e tika ana (TMOA).</p>	<ul style="list-style-type: none"> <li>• Whakatau hōtaka ako kia angitu ngā ākonga.</li> <li>• Whakangungu kaiako mō te reo matatini, hangaanga reo matatini, tuhituhi mō ngā tama</li> <li>• Whakapakari ake i ngā pūkenga tuhituhi, reo ā waha, pānui (māramatanga).</li> <li>• Tirohia ngā hōtaka ako ki kura kē. Haere ki te mātakitaki i ngā mātanga mō te whakaako reo matatini.</li> <li>• Nohotahi me ētehi kaiako ki te whakaōrite ngā aromatawai.</li> <li>• Whakatau arotahinga.</li> <li>• Me whai wāhi ngā ākonga Tau 5-8 ki te whakatau whāinga ako mā rātou.</li> <li>• Me tīmata ki te whakauru ngā āhuatanga o TMOA hou</li> </ul>	<p>2026</p> <p>2026 ongoing</p> <p>Ongoing</p> <p>Ia tau</p> <p>Ia tau</p> <p>Ia tau</p> <p>2026</p>
<p>Kia piki ake ngā mōhiotanga pāngarau kia eke ai ngā taumata mō ngā whenu katoa.</p>	<ul style="list-style-type: none"> <li>• Tuitui i ngā whenu ki te Tau.</li> <li>• PLD mō ngā kaiako</li> <li>• Whakatau arotahinga</li> <li>• Hokona ngā raumei tautoko – Matific, ngā raemi ā ringa</li> <li>• Tautoko i tō tātou</li> <li>• Mātau ahumoni (Financial literacy) – ASB</li> <li>• Nohotahi me ētehi kaiako/kura ki te whakaōrite ngā aromatawai.</li> <li>• Hāpai Pāngarau (Tau 7/8)</li> <li>• Me uru ngā kaiako ki ngā mahi whakangungu mō te Pāngarau.</li> </ul>	<p>Ongoing</p> <p>Ongoing</p> <p>Ongoing</p> <p>2026 ongoing</p> <p>2026 ongoing</p> <p>Ia rua tau</p> <p>Ongoing</p> <p>2026</p> <p>2026</p>
<p>Kia whai kaha te kura ki te whakaako i ngā Mahi a te Rēhia - music, visual, drama, performing arts, kapa haka.</p>	<ul style="list-style-type: none"> <li>• Whakahaere i te Kōwhiringa Pūmanawa – toi, pūoro, kanikani, whakaari. Ngā akoranga e ngākaunui ana ki ngā ākonga.</li> <li>• Whakapakari ake i te taha auaha o ngā tamariki.</li> <li>• Whakangungu kaiako – Whakaari, Toi, Pūoro</li> <li>• Whakatau kaiako e mōhio pai ana ki te whakaako, ā, he pūkenga anō hoki ōna, he mātanga (specialists)</li> <li>• Whakahaere rōpū kapa haka mō te kura – Whakataetae ā rohe, ā-motu, Koroneihana, Hauraki Festival.</li> <li>• Whakatau pūtea tautoko.</li> </ul>	<p>Ia tau</p> <p>Ongoing</p> <p>Ongoing</p> <p>2026 ongoing</p> <p>2026 ongoing</p> <p>2026 ongoing</p>
<p>Kia tuitui ngā kaupapa Māori Motuhake, Ngā kaupapa Motuhake o Waikato-Tainui, Ngā kōrero motuhake e pā ana ki TMMKKM, Te Mātauranga Māori.</p>	<ul style="list-style-type: none"> <li>• Tirohia ngā kaupapa whakaako: Tiriti o Waitangi, He Whakaputanga – Whakaputanga o te Rangatiratanga o Aotearoa, Waka. Raupatu, Te Pūtake o te Riri, Manawaroa, Matariki, te aha, te aha.</li> <li>• Hāpai/Tautoko ngā āhuatanga motuhake o Tainui- Rikata, Kororeihana, Te Pūtake o te Riri, Poukai.</li> <li>• Whakaako tō tātou ake hītori – Aotearoa /reo/kura</li> <li>• Haere ki tētehi marae o Tainui.</li> <li>• Ako kōrero e pā ana ki ngā mana whenua – , noho marae, marau a kura.</li> </ul>	<p>Ongoing</p> <p>2026 ongoing</p> <p>2026 ongoing</p> <p>2026 ongoing</p> <p>2026 ongoing</p>

<p>Kia hāpai tonu i ngā mahi hauora.</p>	<ul style="list-style-type: none"> <li>• Whakaako / whakatakoto hōtaka mō te Hōkakatanga me te Tau ā Roro.</li> <li>• Whakatū hui mō te whānau (Hōkatanga/Te Tuakiri o te Tangata)</li> <li>• Hāpai i ngā uara o te kura.</li> <li>• Whakaako pūkenga hapori</li> <li>• Patuki Tahī – kaukau, kaiaka, oma whakawhiti whenua, poitūkohu, pā whutupāoro kēmu hōtoke</li> <li>• Whakarite tīma mō ngā mahi waka kōpapa - rikata.</li> <li>• Tono pūtea tautoko.</li> <li>• Pātai ki ngā mātua/whānau o ngā tamariki hōu (Uiui).</li> <li>• Tāutungia ngā tamariki me ō rātou pūmanawa.</li> <li>• Whakatau huarahi-hōtaka tautoko/Kōwhiringa pūmanawa</li> <li>• Whakawhānuitia ngā mōhioanga o ngā kaiako.</li> <li>• Whakawhānuitia ngā mōhioanga o ngā whānau.</li> <li>• Whakarite rauemi hei tautoko.</li> <li>• Ka Kai. Ka Ora!</li> <li>• Kickstart Breakfast</li> </ul>	<p>2026 ongoing</p> <p>2026</p> <p>Ia tau</p> <p>Ongoing</p> <p>Ongoing</p> <p>Ongoing</p> <p>Ia tau.</p> <p>Ia tau</p> <p>Ongoing</p> <p>Ia tau</p>
<p>Kia whai whakaaro ngā tamariki ki te taiao me pēwhea te tiaki, te para kore hoki.</p>	<ul style="list-style-type: none"> <li>• Whakatū tētehi Rōpū Taiao hōu</li> <li>• Noho hei Kura Waitī – mahi tiaki i te awa me te taiao</li> <li>• Whakatau ngā whāinga mō ia tau – hanga mahere rautaki.</li> <li>• Tono pūtea</li> <li>• Mahi tahi ki ngā mātua, ngā tāngata o te hapori.</li> <li>• Whakatō, whakatipu kai.</li> <li>• Tiaki i te pāmu noke.</li> <li>• Tiaki i te pūwairākau.</li> <li>• Mahi hangarua – pepa, ipu, pātara, kai, kēne.</li> <li>• Whakapai i te kura –matarahi/pou.</li> <li>• Whakaheke ngā para i roto i ngā pouaka kai (Para Kore)</li> </ul>	<p>Ongoing</p> <p>2026 ongoing</p> <p>Ia tau</p> <p>Ia tau.</p> <p>Ongoing</p> <p>Ongoing</p>
<p>Kia whai wāhi ngā tamariki ki te ako i te Hangarau Matihiko/Te Ako a Mangarau.</p>	<ul style="list-style-type: none"> <li>• Whakaako i ngā āhuatanga kia noho haumarua ai ngā tamariki ki Te Ao Matihiko / Hangarau.</li> <li>• Whakaako pūkenga hangarau matihiko ki ngā ākonga.</li> <li>• Hoko rauemi hei tautoko.</li> <li>• Tautoko i ngā kaiako mā te whakangungu –PLD/Online/ U Learn</li> <li>• Whakarite akoranga hou –Young Animators etc.</li> <li>• Whakamahi i te Tiemiemi</li> <li>• Me whakaako i ngā pūkenga kia noho haumarua ai ngā ākonga – Cybersafety</li> <li>• Me āta whakatau ngā wāhi ipurangi e tika ana mō ngā ākonga – ko te reo Māori te whakaaro matua.</li> </ul>	<p>Ia tau</p> <p>Ia tau</p> <p>Ia tau</p>
<p>Kia whai wāhi ako ki waho atu i te kura kia whai wheako hou ngā ākonga.</p>	<ul style="list-style-type: none"> <li>• Me whakatau haerenga hei tautoko i ngā akoranga.</li> <li>• Me mahitahi me kurā kē.</li> <li>• Mahitahi ki a Te Kohao Health – Tipu Aki Programme</li> </ul>	<p>Ia tau</p> <p>Ia tau</p> <p>2026</p>

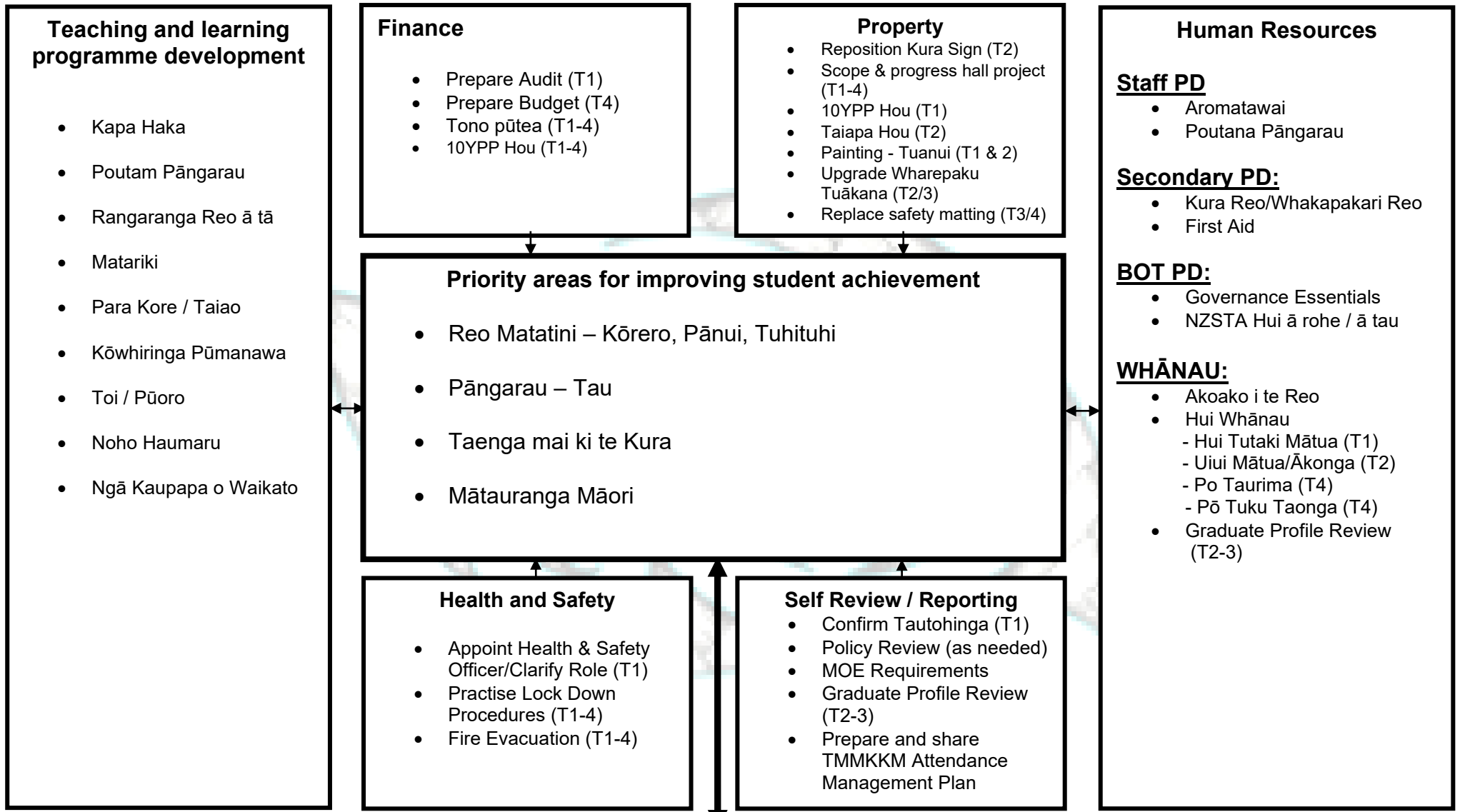
# STRATEGIC PLAN FOR CURRICULUM, SUPPORT PROGRAMMES, COMMUNITY PARTNERSHIP & TEACHER DEVELOPMENT 2026

Objectives	Strategies	Anticipated Duration / Responsibility
Kia hāngai tika ngā mahi o te kura ki tō Te Aho Matua.	<ul style="list-style-type: none"> <li>• Whakatū wānanga mō ngā kaiako me te whānau whānui.</li> <li>• Tirohia ngā hangarau matihiko hei huarahi tuku mōhiotanga ki ngā whānau. Waihanga ētehi kauhau tuihono (webinar).</li> <li>• Whakatau pūtea tautoko/Tono pūtea. Wānangahia tō tatou hononga ki Te Rūnanga o Ngā Kura TAM.</li> </ul>	Ia tau. Ongoing 2026
Kia whakapakari ake ngā mahi ngātahi o te kura me te whānau.	<ul style="list-style-type: none"> <li>• Whakahaere ohu mahi</li> <li>• Akiaki i ngā mātua ki te whakatū kaupapa.</li> <li>• Whakatū wānanga e pā ana ki ngā marau, ngā akoranga me ngā pūkenga mātua</li> <li>• Whakahaere te Mana Tōpū hei rōpū tautoko/kohi pūtea mō ngā whānau</li> <li>• Whai wāhi ngā mātua ki te whakamahi pūkenga ki roto i te kura – Kōwhiringa Pūmanawa, Wānanga Reo, Wānanga Te Aho Matua.</li> <li>• Hui Whānau - whakatau kaupapa, hui pūkenga mātua.</li> <li>• Whakanui i a Matariki</li> <li>• Hangaia he pukapuka whakamarama – induction book mō ngā whānau (MaK, Mauri Tau, Te Hītori o te kura, Te Aho Matua, Karakia, Waiata etc)</li> </ul>	2026 2026 ongoing 2026 ongoing Ia tau Ongoing Ongoing Ia tau 2026
Kia ū kaha te whānau whānui o te kura ki ā tātou nei uara.	<ul style="list-style-type: none"> <li>• Whakanui i te hunga kaha whakatinana i ngā uara.</li> <li>• Āta wānanga i ngā uara – he aha i kite ai, he aha i rongō ai, he aha i mahi ai.</li> <li>• Whakahaere wānanga (TAM) mō ngā whānau.</li> <li>• Me toha atu te puka Mauri Tau ki ngā whānau.</li> </ul>	Ia tau 2026 Ongoing 2026
Kia ngākaunui ki tō tātou hapori whānui.	<ul style="list-style-type: none"> <li>• Tautoko ngā mahi o te hapori – TKR o Ngā Kuaka, Te Whare Wānanga o Waikato, Te Kohao Kōhungahunga, Te Kohinga Marama Marae, Hilda Ross etc</li> <li>• Tautoko i ngā kaupapa mō te hunga rawa kore, kore ki – eg. The Serve, Foodbank etc</li> <li>• Tuku kākahu mahue ki ngā ipu kākahu.</li> <li>• Kohi pūtea, kai hei tākoha – Tihate Māwhero ...</li> </ul>	Ongoing Ia wāhanga. Ia tau. Ongoing Ongoing
Kia kaha ake te taenga mai o ngā ākonga ki te kura me te whakaheke i ngā ngarotanga i te kura	<ul style="list-style-type: none"> <li>• Tuhia he Attendance Management Plan mō te kura</li> <li>• Whakarite ētehi huarahi whakanui -ākonga, ākomanga mō te taenga mai ki te kura</li> </ul>	2026 2026
Kia whakapaakri ngā mōhiotanga, ngā pukenga aromatawai a ngā kaiako	<ul style="list-style-type: none"> <li>• Whai atu i ngā mahi whakangungu mō te taha aromatawai</li> <li>• Whakamātau ngā akoranga hou</li> <li>• Arotake me te whakahoungia ngā momo huarahi aromatawai o te kura</li> </ul>	2026 2026 2026

# STRATEGIC PLAN FOR PERSONNEL, PROPERTY, PROCESSES & SYSTEMS 2026

Objectives	Strategies	Anticipated Duration
<p>Kia tiroiro (scope) ki ngā mahi mō te whakatū hōro.</p>	<ul style="list-style-type: none"> <li>• Mahitahi ki a Education Services Limited.</li> <li>• Whakarite huarahi mō te hanga hōro</li> <li>• Kohi whakaaro mō te āhua me ngā momo mahi ki roto.</li> <li>• Whakatau te āhua.</li> <li>• Whakatau te utu.</li> <li>• Whakatau pūtea.</li> <li>• Kōrero tahi ki te MOE.</li> <li>• Tirohia ētehi atu kura me ō rātou hōro.</li> <li>• Tirohia te taha pūtea – he aha ngā wāhi tautoko ā-pūtea (Mana Tōpū)</li> <li>• Me whakarite māhere mahi.</li> <li>• Hangaia te hōro.</li> </ul>	<p>2026 2026 2026</p> <p>2026 2026 2026 ongoing 2026 2026 2026 2026 ongoing 2026 ongoing</p>
<p>Kia whakapai ake ētehi wāhanga o te kura</p>	<ul style="list-style-type: none"> <li>• Hanga he taiapa hou – Kēti 10 &amp; taha o Orchard Park</li> <li>• Whakapaipai Block A (admin), wharepaku tuākana, ngā waikeri</li> </ul>	<p>2026</p>
<p>Kia whakahoungia te papa haumarū i raro i te papa takaro teina.</p>	<ul style="list-style-type: none"> <li>• Kimihia ngā utu</li> <li>• Tono pūtea</li> <li>• Whakatau kamupene</li> <li>• Whakahoungia</li> </ul>	<p>2026</p>

## Tōku Māpihi Maurea KKM - Mahere ā-Tau 2026



<p><b>Communication</b></p> <p>Kura Pānui (TT-4)</p> <p>Pō Tūtaki Kaiako (T1)</p> <p>Student Lead Conferences/See Saw (T2)</p> <p>Puka Mata / Whārangī Ipurangi</p> <p>Purongo Tamaiti (T2 &amp; 4)</p> <p>Class Doji</p>	<p><b>Partnership with the community Collaboration</b></p> <p>Te Aho Matua Wānanga</p> <p>Noho Marae (T2)</p> <p>Rikata / Kingitanga Day / Koroneihana/Poukai</p> <p>Hui Whānau / Akoako I te Reo</p> <p>Hononga ki ngā Mana Whenua</p>	<p><b>Consultation</b></p> <p>Graduate Profile</p> <p>Kaupapa Here</p>
---	---	--

**Tōku Māpihi Maurea Kura Kaupapa Māori**  
**2026 ANNUAL PLAN – REO MATATINI AIMS AND TARGETS (PĀNUI)**

**Strategic Aim:**

All learners are able to access Te Marautanga o Aotearoa (TMOA) as evidenced by progress and achievement in relation to Ngā Taumata o Te Marautanga o Aotearoa.

**Annual Aim:**

All students who require a tailored programme of support will make the accelerated progress they need to achieve or exceed expectations in relation to Ngā Taumata o Te Marautanga o Aotearoa by the end of the year.

**Evidence/Baseline 2025 data:**

Analysis of kura wide data shows that a significant majority of learners are achieving or exceeding expectations in relation to TMOA – PĀNUI:

Some students require a tailored programme to achieve success in relation to TMOA:

**2026**

<b>6 marama</b>	0	<b>Tau 4</b>	2
<b>Tau 1</b>	0	<b>Tau 5</b>	1
<b>18 marama</b>	0	<b>Tau 6</b>	2
<b>Tau 2</b>	1	<b>Tau 7</b>	1
<b>Tau 3</b>	3	<b>Tau 8</b>	2

**Targets:**

Twelve learners across all year levels require more support to achieve or exceed TMOA Reo Matatini (Pānui) expectations. There is a need for a more tailored programme of support to be put in place by the end of Term 1.

<b>Year level</b>	<b>Pānui level</b>	<b>Year level</b>	<b>Pānui level</b>
<b>6 marama</b>	KHa	<b>Tau 4</b>	KPa – KKi/KPa - KPa
<b>Tau 1</b>	KHa/Khe KHe	<b>Tau 5</b>	KPa/KPe - KPe
<b>18 marama</b>	KHe - KHi	<b>Tau 6</b>	KPe/KPi - KPi
<b>Tau 2</b>	KHi/KKa - KKa-KKa/KKe	<b>Tau 7</b>	KPi/KPo – KPo
<b>Tau 3</b>	KKe– KKe/Kki-KKi	<b>Tau 8</b>	KPo/M - M

Kpi

<b>Actions to achieve targets</b>	<b>Timing</b>	<b>Repsonsibility</b>	<b>Resourcing</b>
1. Review progress and achievement data with staff for all learners who require tailored support.	Term 1, 2026	Tumuaki/Pouako	Nil
2. Determine the learning needs of each of these learners (12) and implement tailored programmes to meet their individual needs.	Term 1-4, 2026	Pouako/Kaiako/ Kaiawhina/Whānau	Teacher Aid Support In Class Support (2) RTL B Referral
3. Ongoing monitoring of identified learners at Hui Kura Tuākana/Teina. Report to Hui Pouako ia wāhanga.	Ongoing throughout the year	Kaiako/Pouako/Tumu aki/ LSC	-
4. Review and refine current programmes in pānui and build on best practice.	Term 1 - 4, 2026	Tumuaki/Lead Kaiako	-
5. Establish pānui tuakana-teina support for learners.	Ongoing throughout the year	Kaiako	-
6. Work with whānau to support home reading programme.	Ongoing throughout the year	Kaiako/Whānau/RTL B/LSC	-
7. Hāpai Ākongā Hōtaka	Wāhanga 1, 2026	Tumuaki/Kaiako/ LSC	Kia Ata Mai (Rauhina)

**Tōku Māpihi Maurea Kura Kaupapa Māori**  
**2026 ANNUAL PLAN – REO MATATINI AIMS AND TARGETS (TUHITUHI)**

**Strategic Aim:**

All learners are able to access Te Marautanga o Aotearoa (TMOA) as evidenced by progress and achievement in relation to Ngā Taumata o Te Marautanga o Aotearoa.

**Annual Aim:**

All students who require a tailored programme of support will make the accelerated progress they need to achieve or exceed expectations in relation to Ngā Taumata o Te Marautanga o Aotearoa - Reo Matatini by the end of the year.

**Evidence/baseline 2025 data:**

Analysis of kura wide data shows that a significant majority of learners are achieving or exceeding expectations in relation to TMOA – TUHITUHI

Some students require a tailored programme to achieve success in relation to TMOA:

2026

<b>6 marama</b>	0	<b>Tau 4</b>	4
<b>Tau 1</b>	0	<b>Tau 5</b>	3
<b>18 marama</b>	0	<b>Tau 6</b>	4
<b>Tau 2</b>	2	<b>Tau 7</b>	7
<b>Tau 3</b>	3	<b>Tau 8</b>	5

**Targets:**

Twenty eight learners across all year levels require more support to achieve or exceed TMOA Reo Matatini (Tuhituhi) expectations. There is a need for a more tailored programme of support to be put in place by the end of Term 1.

<b>Year level</b>	<b>Tuhituhi level</b>	<b>Year level</b>	<b>Tuhituhi level</b>
<b>6 marama</b>	Tūārere 1 Ka Oho	<b>Tau 4</b>	Tūārere 3 Ka Marewa
<b>Tau 1</b>	Tūārere 1 Ka Oho	<b>Tau 5</b>	Tūārere 3 Ka Marewa
<b>18 marama</b>	Tūārere 1 Ka Oho Ka Oho-Ka Whai Huru	<b>Tau 6</b>	Tūārere 2 Ka Marewa Ka Marewa - Ka Rere
<b>Tau 2</b>	Tūārere 1 Ka Whai Huru	<b>Tau 7</b>	Tūārere 3 Ka Rere
<b>Tau 3</b>	Tūārere 1 Ka Whai Huru Ka Whai Huru – Ka Marewa	<b>Tau 8</b>	Tūārere 3 Ka Rere+

<b>Actions to achieve targets</b>	<b>Timing</b>	<b>Responsibility</b>	<b>Resourcing</b>
1. Review progress and achievement data with staff for all learners who require tailored support.	Term 1-4, 2026	Tumuaki/Lead Teacher	Nil
2. Determine the learning needs of each of these learners (28) and implement tailored programmes to meet their individual needs.	Term 1, 2026	Pouako/Kaiako/ Kaiawhina/Whānau	Teacher Aid Support In Class Support (2) RTL B Referral
3. Ongoing monitoring of these learners at Hui Kura Teina/Tuakana. Report to Hui Pouako ia wāhanga.	Ongoing throughout the year	Kaiako/Pouako/ Tumuaki / LSC	-
4. Review and refine current programmes in tuhituhi and build on best practice.	Term 1 - 4, 2026	Tumuaki/Lead Teacher	-
5. Work with whānau to support Tuhituhi Programme.	Ongoing throughout the year	Kaiako/Whānau/ RTL B/LSC	-

**Tōku Māpihi Maurea Kura Kaupapa Māori**  
**2026 ANNUAL PLAN – REO MATATINI AIMS AND TARGETS (KŌRERO)**

**Strategic Aim:**

All learners are able to access Te Marautanga o Aotearoa (TMOA) as evidenced by progress and achievement in relation to Ngā Taumata o Te Marautanga o Aotearoa.

**Annual Aim:**

All students who require a tailored programme of support will make the accelerated progress they need to achieve or exceed expectations in relation to Ngā Taumata o Te Marautanga o Aotearoa – Kōrero.

**Evidence/baseline 2025 data:**

Analysis of kura wide data shows that a significant majority of learners are achieving or exceeding expectations in relation to TMOA – KŌRERO. Some students require a tailored programme to achieve success in relation to TMOA.

**2026**

<b>6 marama</b>	0	<b>Tau 4</b>	6
<b>Tau 1</b>	0	<b>Tau 5</b>	3
<b>18 marama</b>	0	<b>Tau 6</b>	6
<b>Tau 2</b>	2	<b>Tau 7</b>	6
<b>Tau 3</b>	3	<b>Tau 8</b>	4

**Targets:**

Thirty across all year levels require more support to achieve or exceed TMOA Reo Matatini (Reo ā waha) expectations. There is a need for a more tailored programme of support to be put in place by the end of Term 1.

<b>Year level</b>	<b>Reo ā waha level</b>	<b>Year level</b>	<b>Reo ā waha level</b>
<b>6 marama</b>	Tūārere 1 1 He Pīpī – 1 He Kaha	<b>Tau 4</b>	Tūārere 2 Taumata 2-3
<b>Tau 1</b>	Tūārere 1 1 He Kaha Ake	<b>Tau 5</b>	Tūārere 2 Taumata 3
<b>18 marama</b>	Tūārere 1 1 He Pakari	<b>Tau 6</b>	Tūārere 2 Taumata 3-4
<b>Tau 2</b>	Tūārere 1 1 He Pakari 2	<b>Tau 7</b>	Tūārere 3 Taumata 4
<b>Tau 3</b>	Tūārere 1 Taumata 2	<b>Tau 8</b>	Tūārere 3 Taumata 4-5

<b>Actions to achieve targets</b>	<b>Timing</b>	<b>Responsibility</b>	<b>Resourcing</b>
1. Review progress and achievement data with staff for all learners who require tailored support.	Term 1-4, 2026	Tumuaki/Lead Teacher	Nil
2. Determine the learning needs of each of these learners (30) and implement tailored programmes to meet their individual needs.	Term 1, 2026	Pouako/Kaiako/ Kaiawhina/Whānau/ LSC	Teacher Aid Support  In Class Support (2) RTLTB referrals
3. Ongoing monitoring of these learners at Whānau Kura Tuakana/Teina. Report to Hui Pouako ia wāhanga.	Ongoing throughout the year	Kaiako/Pouako/ Tumuaki / LSC	-
4. Review and refine current programmes in Reo ā waha and build on best practice including mahi whakarongo/kōrero.	Term 1 - 4, 2026	Tumuaki/Lead Teacher	-
5. Ongoing development of a reo ā waha programme for TMMKKM.	Term 1-2 2026	Karepe / Laura / Dorie	
6. Work with whānau to increase use of reo Māori at home.	Ongoing throughout the year	BOT/Kura/Whānau	
7. Work with whānau in and around ways of supporting tamariki at home with Reo ā waha.	Term 1-4, 2026	Tumuaki/Lead Teacher/RTLTB/ Whānau/LSC	-
8. PLD/Kaahui Ako aligned to specific teacher identified needs/moderation.	Ongoing throughout the year	Tumuaki/Lead Teacher	

**Tōku Māpihi Maurea Kura Kaupapa Māori**  
**2026 ANNUAL PLAN – PĀNGARAU AIMS AND TARGETS (TAU)**

**Strategic Aim:**

All learners are able to access Te Marautanga o Aotearoa (TMOA) as evidenced by progress and achievement in relation to Ngā Taumata o Te Marautanga o Aotearoa.

**Annual Aim:**

All students who require a tailored programme of support will make the accelerated progress they need to achieve or exceed expectations in relation to Ngā Taumata o Te Marautanga o Aotearoa by of the year.

**Evidence/baseline 2025 data:**

Analysis of kura wide data shows that a significant majority of learners are achieving or exceeding expectations in relation to TMOA – TAU. Some students require a tailored programme to achieve success in relation to TMOA.

**2026**

<b>Tau 1</b>	0	<b>Tau 5</b>	2
<b>Tau 2</b>	1	<b>Tau 6</b>	1
<b>Tau 3</b>	2	<b>Tau 7</b>	2
<b>Tau 4</b>	5	<b>Tau 8</b>	4

**Targets:**

Seventeen learners across all year levels require more support to achieve or exceed TMOA Pāngarau (Tau) expectations. There is a need for a more tailored programme of support to be put in place by the end of Term 1.

Year level	Tau level	Year level	Tau level
<b>6 marama</b>	Kaupae 1-2	<b>Tau 4</b>	Kaupae 5e
<b>Tau 1</b>	Kaupae 2-3	<b>Tau 5</b>	Kaupae 6a
<b>18 marama</b>	Kaupae 2-3	<b>Tau 6</b>	Kaupae 6 e
<b>Tau 2</b>	Kaupae 4	<b>Tau 7</b>	Kaupae 7
<b>Tau 3</b>	Kaupae 5a	<b>Tau 8</b>	Kaupae 7-8

Actions to achieve targets	Timing	Responsibility	Resourcing
1. Review progress and achievement data with staff for all learners who require tailored support.	Term 1-4, 2026	Tumuaki/Lead Teacher	Nil
2. Determine the learning needs of each of these learners (17) and implement tailored programmes to meet their individual needs.	Term 1-4, 2026	Pouako/Kaiako/ Kaiawhina/ Whānau/LSC	Teacher Aid Support In Class Support (2)
3. Review coverage and balance of the Pāngarau strands. Develop and implement a balanced curriculum plan. Moderate data.	Term 1, 2026	Tumuaki/Lead Teacher	-
4. Develop PLD plan based on needs analysis - whole kura, linked to annual targets.	Term 1-4, 2026	Tumuaki/Lead Teacher	-
5. Enrol all Tau 3-8 ākonga in Matific (online programme).	Term 1-4 2026	Lead Teacher	\$1800.00
6. Kura based PLD aligned to Government changes.	Ongoing throughout the year	Tumuaki/Lead Teacher	
7. Te Hāpai Ākonga Accelerated Programme Tau 7-8	Term 2-3 2026	Tumuaki / PLD Provider	NIL

**Tōku Māpihi Maurea Kura Kaupapa Māori**  
**2026 ANNUAL PLAN – ATTENDANCE TARGETS**

**Strategic Aim:**

To increase attendance and engagement by focusing on ākonga being present, participating and progressing.

**Annual Aim:**

Support whānau to ensure ākonga are attending kura more regularly.

**Evidence/baseline 2025 data:**

Analysis of kura wide data shows that there is a need to support and encourage our whānau to send their tamariki to kura on a more regular basis. Baseline data shows that between 30-50% of ākonga attended kura on a regular basis.

Measure	Equivalent to	2024 Rates	2025 Rates
<b>Good Attendance (&gt; 90%)</b>	Less than 5 days a term absence	Term 1=50% Term 2= 38% Term 3= 30% Term 4 = 41%	Term 1= 38% Term 2= 46% Term 3= 47% Term 4= 49%
<b>Worrying Attendance (80-90%)</b>	Up to 10 days a term absence	Term 1= 32% Term 2 = 40% Term 3= 30% Term 4= 38%	Term 1= 32% Term 2= 28% Term 3= 36% Term 4= 25%
<b>Concerning Attendance (70-80%)</b>	Up to 15 days a term absence	Term 1= 14% Term 2 = 12% Term 3 =22% Term 4 =15%	Term 1= 10% Term 2= 9% Term 3= 10% Term 4= 14%
<b>Very Concerning Attendance (&lt;70%)</b>	15 days or more absence a term	Term 1= 4% Term 2= 11% Term 3 =17% Term 4= 8%	Term 1= 6% Term 2= 8% Term 3= 6% Term 4= 11%

**Kura Target**

What would success look like?

Success would look like an increase to Regular/Good Attendance, whereby more of our tamariki are attending regularly. The category where the most positive shift could be made is with the Worrying/Irregular Attendance - reducing this category would have a positive impact on Regular/Good Attendance.

While we will also focus on the other two categories, a greater shift can be made focusing on these tamariki and whānau with Worrying/Irregular Attendance.

**Annual Target for 2026**

In 2025, 45% of our tamariki were attending regularly across the 4 terms. We aim to increase Regular Attendance by 12-15% every year, which would meet the government target of 80% of children attending 90% of the time before the timeframe of 2030 set by the government.

Actions to achieve targets	Timing	Responsibility	Resourcing
1. Create TMMKKM Attendance Management Plan for BOT approval	Term 1, 2026	Tumuaki ?BOT	N/A
2. Share TMMKKM Attendance Management Plan	Term 1, 2026	Tumuaki	N/A
3. Ensure and encourage all whānau to link to Edge to report daily absences	Term 1 2026	Tumuaki/Office Administrator	Kura P ānui / Pukamata/ Pō Tutaki Mātua/Kaiako

4. Office to follow up on any absentees by 9:30am each day via text, email or phone call.	Term 1-4, 2026	Tumuaki/Office Administrator	Contact details of whanau
5. Encourage whānau to send their tamariki to kura and emphasise the importance of attendance.	Term 1-4, 2026	Tumuaki/Lead Teacher	Kura pānui / Pukamata / Hui whānau
6. Provide incentives for ākonga who attend 90 - 100% each term	Term 1-4, 2026	Tumuaki	\$20 Warehouse vouche for wach ākonga \$100 voucher for end of year Budget \$1000.00
7. Class Incentive – Ninja Valley – Show Up & Shine Attendance Programme	Term 1-4, 2026	Tumuaki / Ninja Valley	Cost of bus
8. Work alongside SWIS to communicate with and support whānau with regular non-attendance.	Term 1-4 2026	Tumuaki / Pouako / SWIS	N/A
9. Send a formal letter to whānau of ākonga who are chronically & moderately absent each term advising of concerns – offer support and hui.	Term 1-4 2026	Tumuaki	N/A
10. Regularly (2 x term) report to BOT on attendance rates and concerns.	Term 1-4 2026	Tumuaki	N/A
11. Meet with Attendance Service – Barnados	Term 1, 2026	Tumuaki	N/A
12. Engage Attendance Services (Barnardos) for for ongoing chronic absenteesim.	All year	Tumuaki	Attendance Services Barnados